

QUICK! TRACK

Double your storage space instantly with this economical overhead track mobile shelving system. Quick Track is designed to provide quick access to supplies, maximize floor space, and allow air and light circulation throughout system.



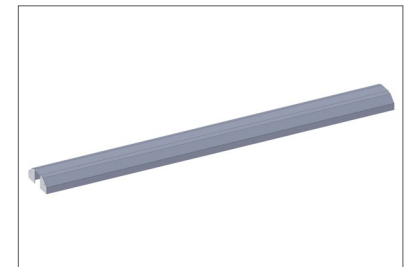
- Eliminates unnecessary aisles
- Easy to install / easy to use
- No tracks on floor
- Guide bar anchored to stationary units with locking collars
- Easy to clean; no dust/debris build-up
- Stainless steel overhead track provides smooth movement of mobile units
- Inserted guide blocks in post tops adjust to keep storage system level on uneven floors
- Load Capacity: 1200 lbs for mobile units, 2000 lbs for stationary units

Guide

- End units should be equal to or great in depth than mobile units.
- An intermediate stationary unit is recommended for track lengths greater than 16ft. Aisle space recommended on each side of a stationary unit.
- A minimum aisle space of 30" – 36" is recommended.
- Track length maximum is 21ft.
- Stationary units to be bolted to the floor to minimize movement.
- Replacement components are available. Contact customer service.

Materials

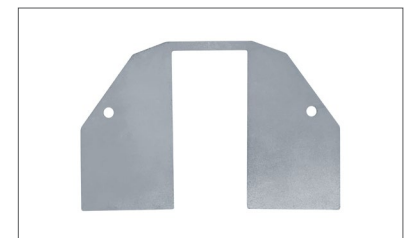
- Posts: 1" diameter chrome
- Shelves: Three-truss chrome 1/4" steel frame
- Casters: 5" polyurethane
- Overhead track extrusion manufactured of heavy-duty aluminum



Overhead Track Kit with End Plates



Track with End Plate



Track End Plate