

Installation Instructions - Evolve Cabinets

Follow these installation instructions for Evolve upper, base, tall, and scope cabinets with stainless steel construction.

Tools needed

- Flat head screwdriver
- Level

Preparing for cabinet installation

Step 1

Identify the location and placement of your cabinets and clean the floor and surrounding area.

Step 2

If infill panels are needed, attach infill panel directly to the inside of the cabinet with adhesive or sheet metal screws before installing cabinets.

Note: Stainless steel cabinets have a 3/4" recessed back panel. If applicable, a spacer board can be inserted in the recessed area where the anchors go through the back of the cabinet.

Installation Instructions - Evolve Cabinets

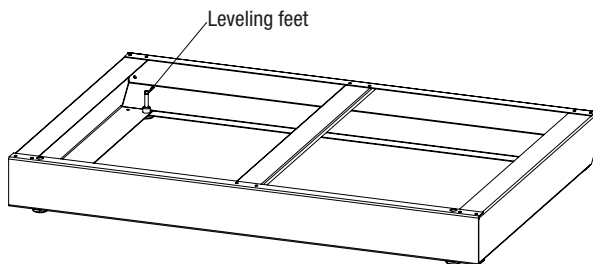
Installing a single base, tall, or scope cabinet

Step 1

Position the cabinet base against the wall. Access leveling feet inside base, and, with a flat head screwdriver, adjust the four leveling feet until the cabinet is level.

Step 2

Mount the cabinet base directly to the wall studs using appropriate fasteners for the type of wall construction.



Step 3

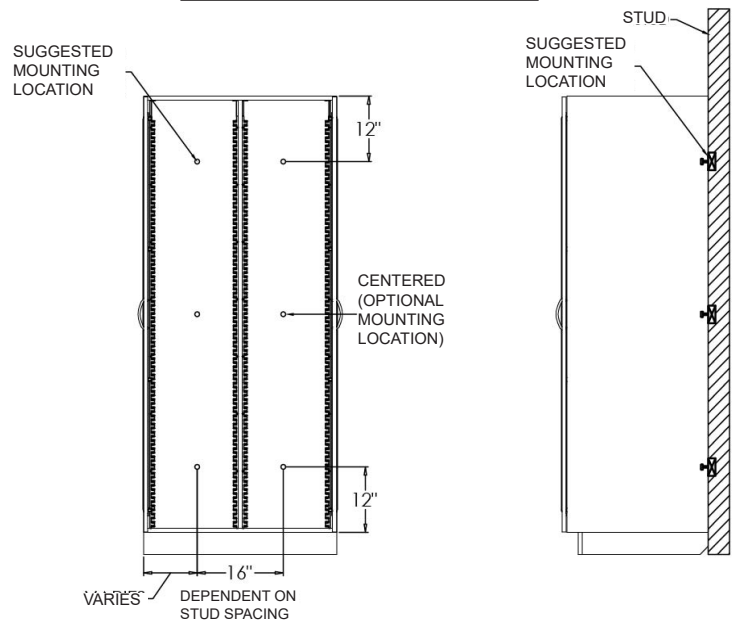
Place the cabinet onto the base.

Step 4

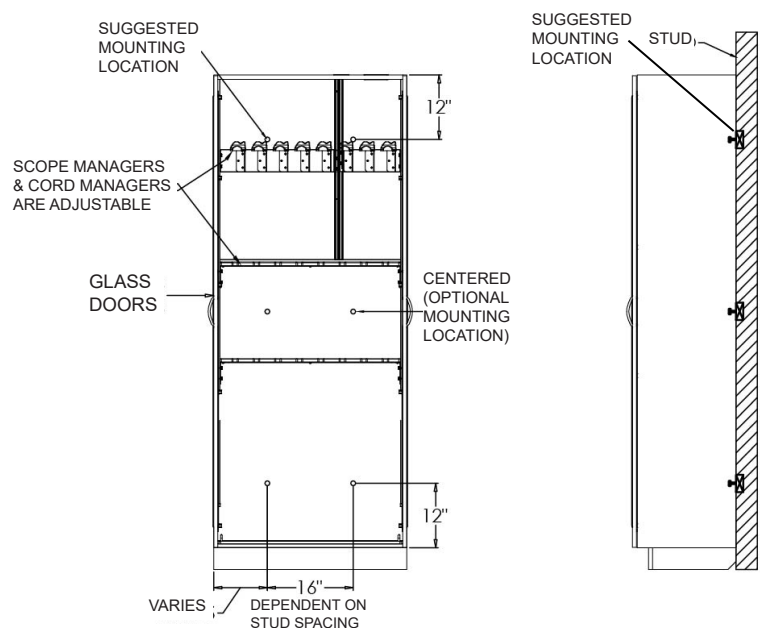
Plumb the cabinet and secure it to the wall through the back panel using appropriate fasteners. See figure for placement.

Questions? Call InnerSpace Technical Service representative at 888-435-2256

NOTE: USE APPROPRIATE FASTENERS FOR WALL TYPE



NOTE: USE APPROPRIATE FASTENERS FOR WALL TYPE



Installation Instructions - Evolve Cabinets

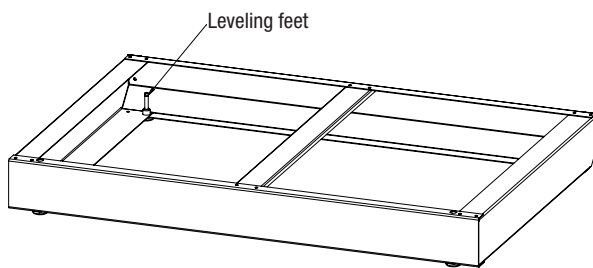
Installing multiple base, tall, and scope cabinets

Step 1

Attach the run of cabinet bases together using sheet metal screws, making sure the bases are flush front to back and top to bottom. Position the run of bases against the wall. Access the leveling feet inside bases, and, with a flat head screwdriver, adjust the feet until the run of bases is level.

Step 2

Mount the bases directly to the wall using appropriate fasteners for the type of wall construction.



Step 3

Place the end cabinet on the base.

Step 4

Plumb the cabinet and secure it to the wall through the back panel using the appropriate fasteners for the type of wall construction. See figure for placement.

Step 5

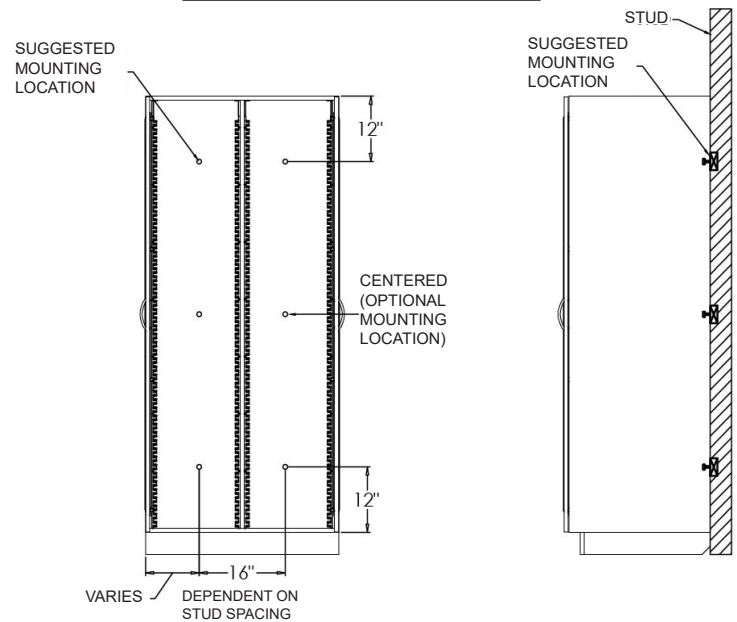
Repeat steps 1-4 with additional cabinets, making sure each is level and plumb.

Step 6

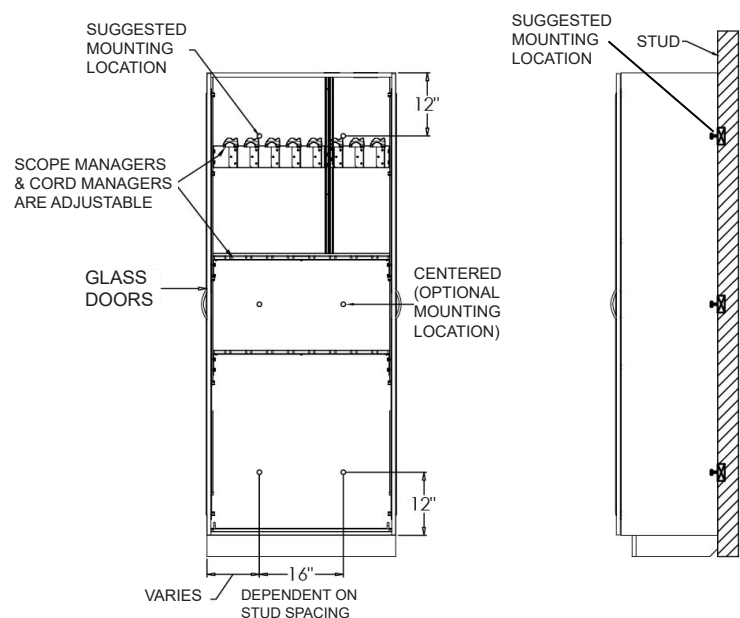
To eliminate gaps in the cabinet run, drill pilot holes $1\frac{1}{2}$ " from the interior front edge of the cabinet and $1\frac{1}{2}$ " from both the inside top and inside bottom of the cabinet. Tighten side-by-side cabinets with $1\frac{1}{4}$ " sheet metal screws.

Questions? Call InnerSpace Technical Service representative at 888-435-2256

NOTE: USE APPROPRIATE FASTENERS FOR WALL TYPE



NOTE: USE APPROPRIATE FASTENERS FOR WALL TYPE



Installation Instructions - Evolve Cabinets

Installing upper wall cabinets

Step 1

Determine location of upper cabinet or cabinet run. Using a level, draw a line marking the location of the bottom of the cabinet.

Step 2

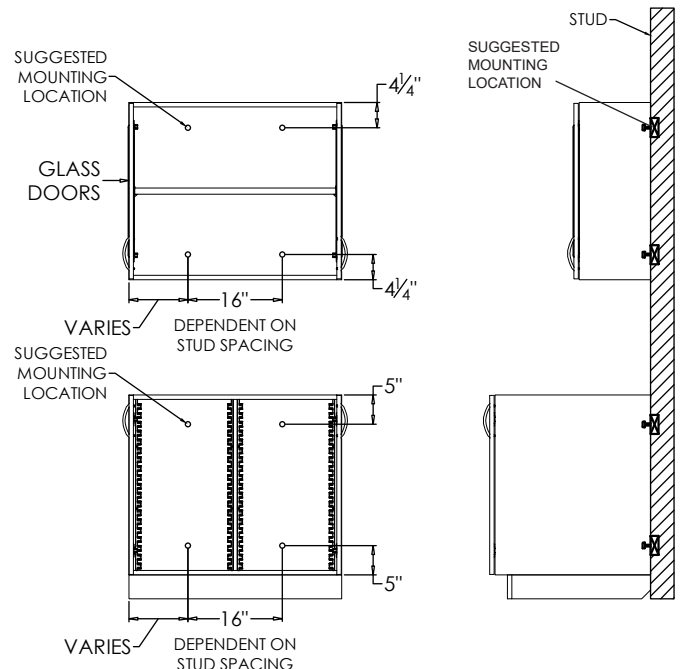
Position cabinet bottom at marked line, making sure the cabinet is level and plumb, and mount the cabinet directly to wall studs using the appropriate fasteners for the type of wall construction. See figure for fastener placement.

Step 3

To eliminate gaps the a cabinet run, drill pilot holes $1\frac{1}{2}$ " from the interior front edge of cabinet and $1\frac{1}{2}$ " from both the inside top and inside bottom of cabinet. Tighten side-by-side cabinets with $1\frac{1}{4}$ " sheet metal screws.

Questions? Call InnerSpace Technical Service representative at 888-435-2256

NOTE: USE APPROPRIATE FASTENERS FOR WALL TYPE



Installation Instructions - Evolve Cabinets

Attaching slope tops to Evolve cabinets

Attachment hardware included.

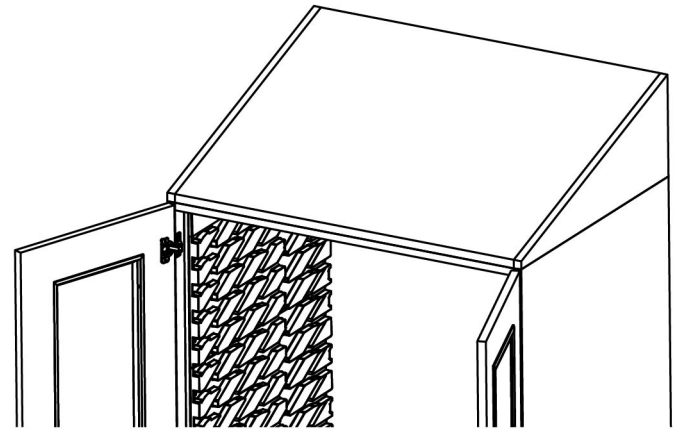
Stainless steel cabinets come predrilled with 5/16" holes on top; sloped tops have pre-installed clips that line up with the predrilled cabinet holes.

Step 1

Place the sloped top on the cabinet.

Step 2

Attach the sloped top to the cabinet from the inside of the cabinet using #8-15 x 3/4 sheet metal screws (total of 4 screws for tall and upper cabinets, total of 2 screws for scope cabinets).



Step 1

Questions? Call InnerSpace Technical Service representative at 888-435-2256



InnerSpace specializes in solutions for all areas and departments within a healthcare facility.

We offer carts, cabinets, open storage, and accessories for supply storage, products with embedded technology for improved efficiency and security, and the Ventaire™ Endoscopy System for the storage, drying, transport, and reprocessing of endoscopes.

InnerSpace is here to help you specify the best products for your needs, whether a standard option or customized solution. We offer complimentary storage analysis and design services. Contact our Customer Service team with your requests or to connect with a sales representative, and find InnerSpace products on GSA Advantage, Premier, and Vizient contracts.



1239 Comstock Street | Marne, Michigan 49435
888-435-2256 phone | 616-743-5944 fax
innerspacehealthcare.com

© 2023 Solaire Medical, Marne, MI 49435
® InnerSpace is a registered trademark of Solaire Medical LLC, Marne, MI 49435
1019